



DURBAN 1885 – 1910 TOWN HALL /POST OFFICE

Foundation stone = 1883

Opened 1885

Cost = £51 000

Part of building used as the Post Office

Sold to Post Office = 1901

Cost = £100 000

Used as Town Hall until 1910

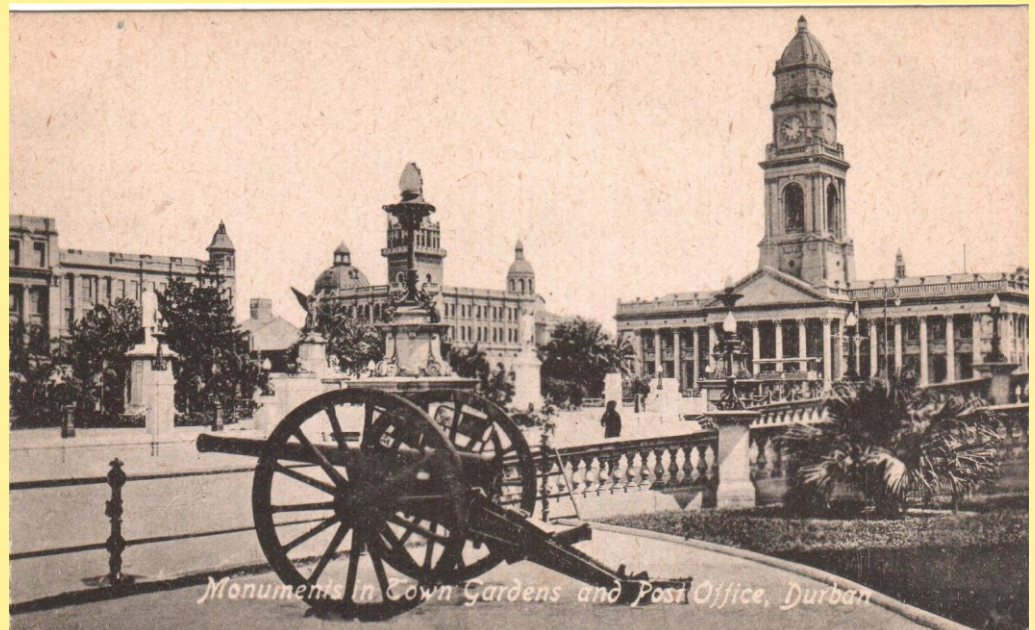
**Post Office and railway station
Unused, divided, A Rittenberg
Durban**

**Designed by Philip Dudgeon in
the Corinthian style – 1883.**

**1908 SA National Convention –
Union of SA Constitution was
drafted here.**

**‘Monuments in town gardens and
post office’**

**Unused, divided, published by
A R, Durban, printed in GB**

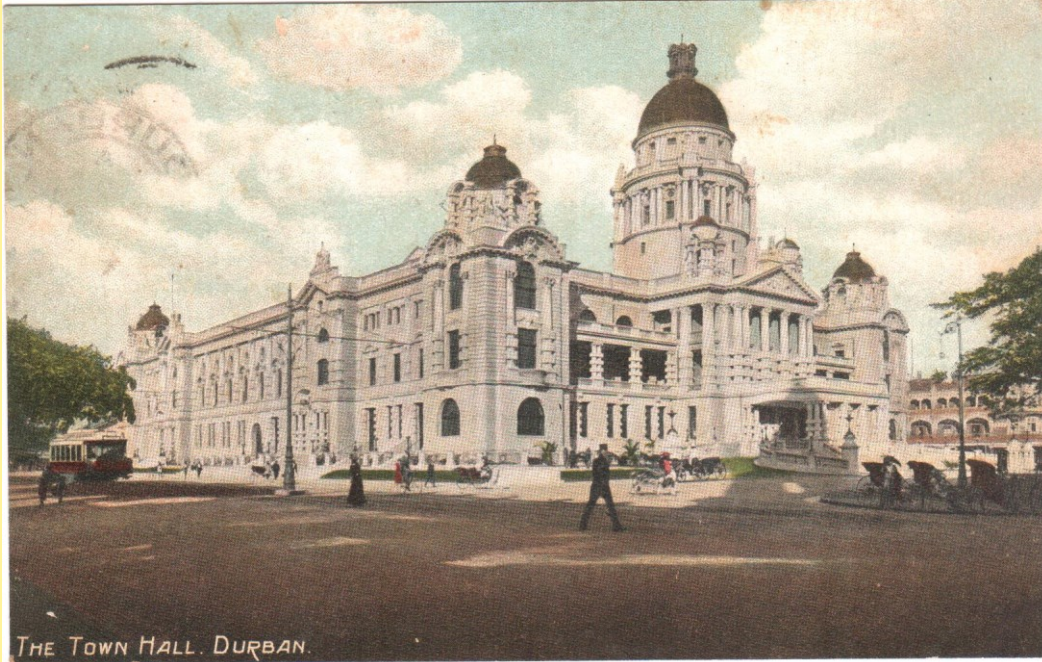




DURBAN'S PROPOSED NEW TOWN HALL.

**Proposed Town Hall
Opened = 1910
Architect – Wollacot, Scot &
Hudson**

**Unused, divided,
publisher unknown**



THE TOWN HALL. DURBAN.

**Durban Town Hall, opened
1910.**

**Town Hall Durban JA 10 11
to PMBurg, divided,
Publisher unknown.**



RAILWAY STATION DURBAN
Built 1892, neo Baroque style.

Durban MY 20 F4 to PMBurg
Undivided, Sallo Epstein?

Additional 2 floors 1903

Unused, divided,
published RO Füsslein,
Johannesburg.

DURBAN RAIL
MR 26 91

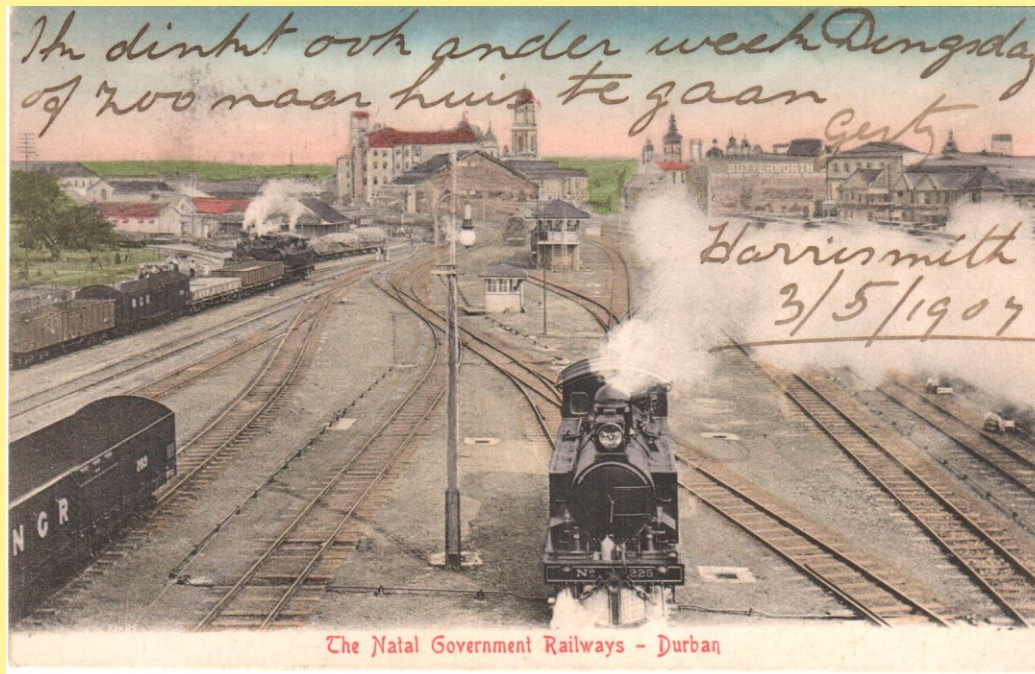




NATAL GOVERNMENT RAILWAYS

Founded in 1877

Railway from Durban to Pietermaritzburg.



RAILWAY YARD, DURBAN

Engine No 225, Dubs 'A' built by Dubs & Co. in 1903.

Converted to a 4-8-2 configuration for shunting purposes.

PIETERMARITZBURG STATION

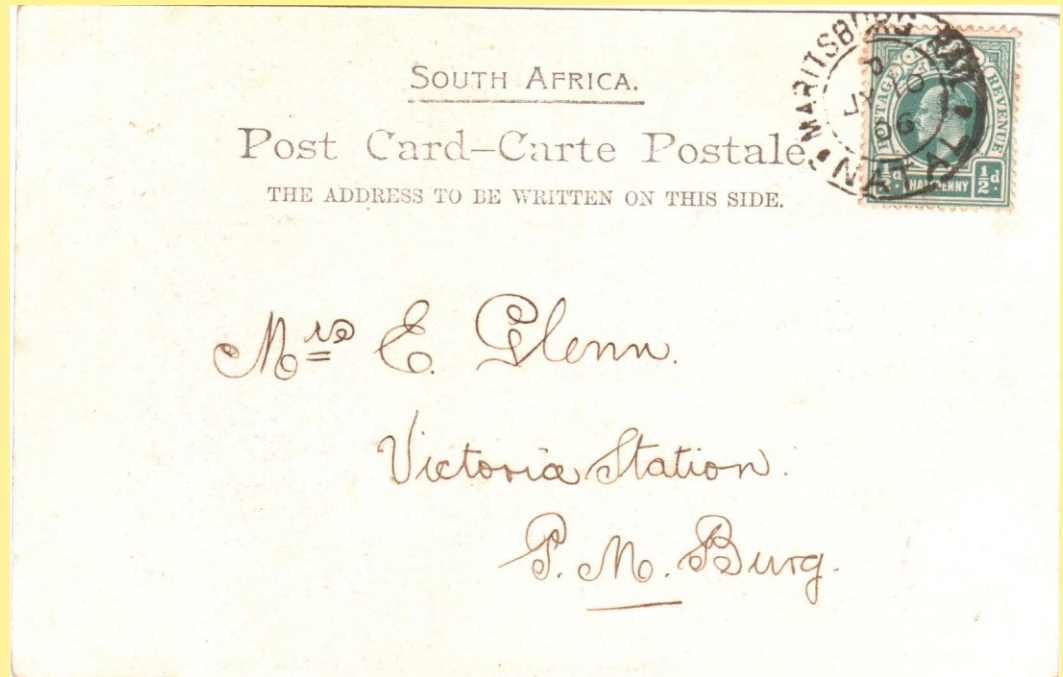
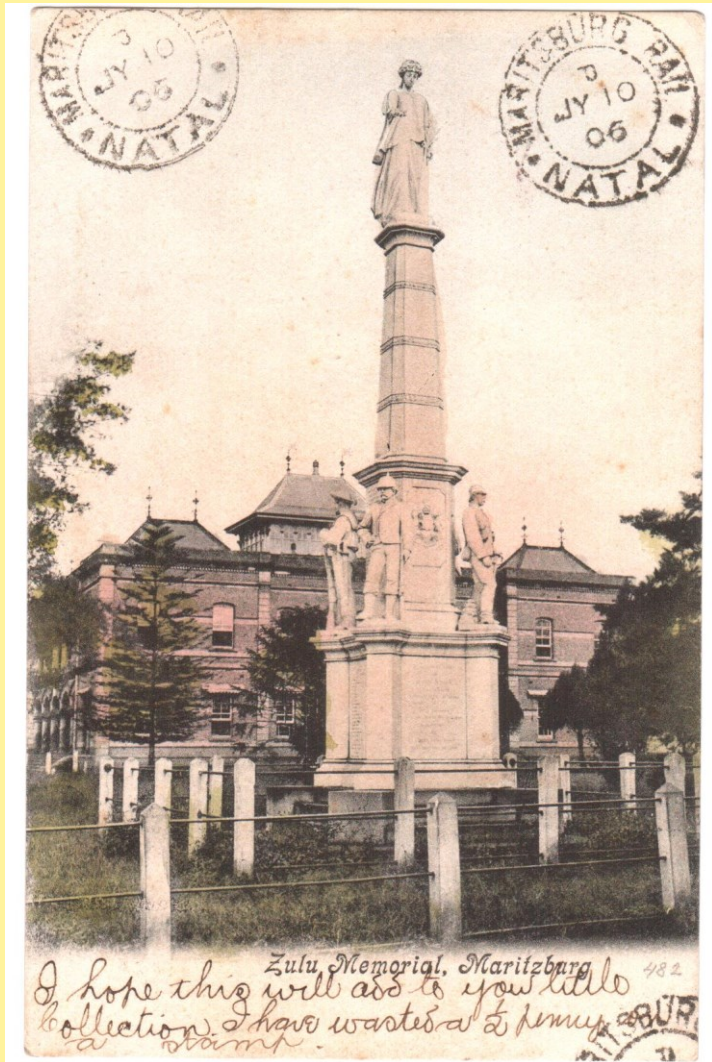
Built 1892, architect William Street-Wilson & Percy Barr.

Pietermaritzburg MR 16 1904 to Greytown, undivided, Sallo Epstein



Mahatma Gandhi was forcibly removed from a train in Pietermaritzburg Station on 7 June 1893. *Satyagraha* – non-violent resistance movement.





MARITSBURG RAIL

JY 10 06, sent locally, undivided, note Post Office behind Zulu War memorial.

Unusual cancellation – Maritzburg with an ‘S’, ‘Pieter’ omitted.



Town Hall, Pietermaritzburg, Natal.

1st TOWN HALL

PIETERMARITZBURG

Foundation stone Prince Alfred 1860

Architect William Street-Wilson

Opened June 1893

Gutted by fire 12 July 1898.

**Unused, undivided, Published
G Budricks' Art Galleries, Cape Town.**



PIETERMARITZBURG TOWN HALL.

2nd TOWN HALL

**Re-building completed
1903, opened August 1901 by
Duke of Cornwall & York
Later King George V**

**Pietermaritzburg JU 19 09 to
Canada, divided , publisher unknown
Boer War memorial (right)
Zulu War memorial (left)**

1st G P O PIETERMARITZBURG

Renaissance architecture
with Romanesque influence
Opened 1875. Later the
Supreme Court. Today it houses
the Tatham Art Gallery. Post Cart
with 8 mules about to leave for
Boston.

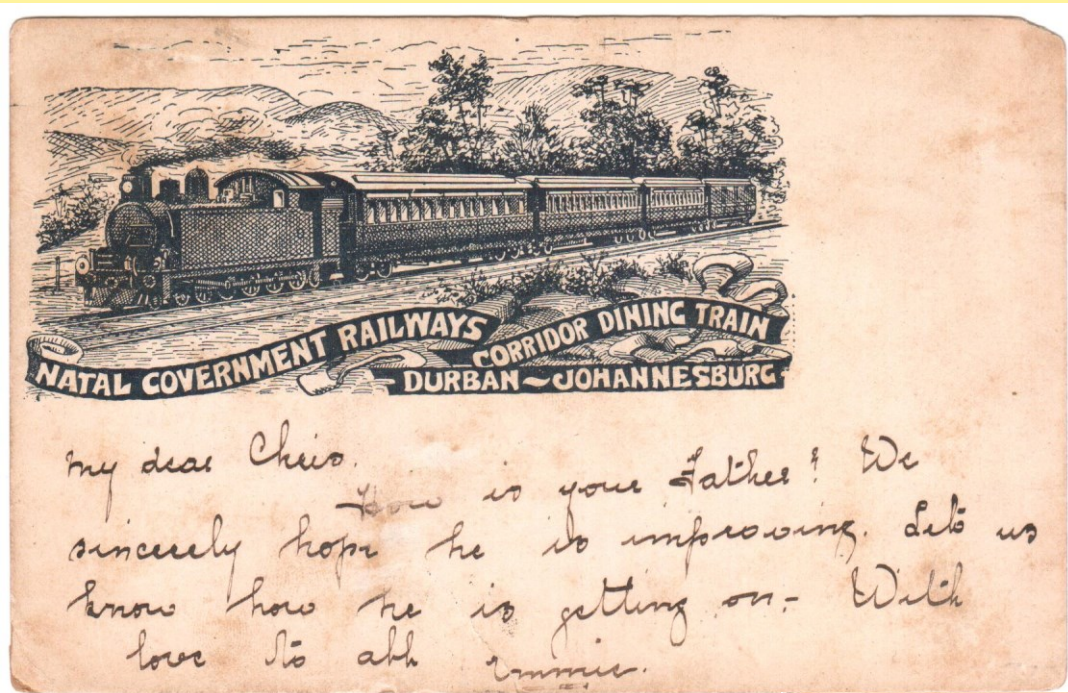
Unused, divided, Sallo Epstein.



2nd G P O

Edwardian style architecture
Opened 1903

Unused, divided, Valentine
and Sons, Co, Cape Town



**Lithographic card, undivided,
issued 1903, Andrew Reid & Co,
New Castle -on-Tyne.**

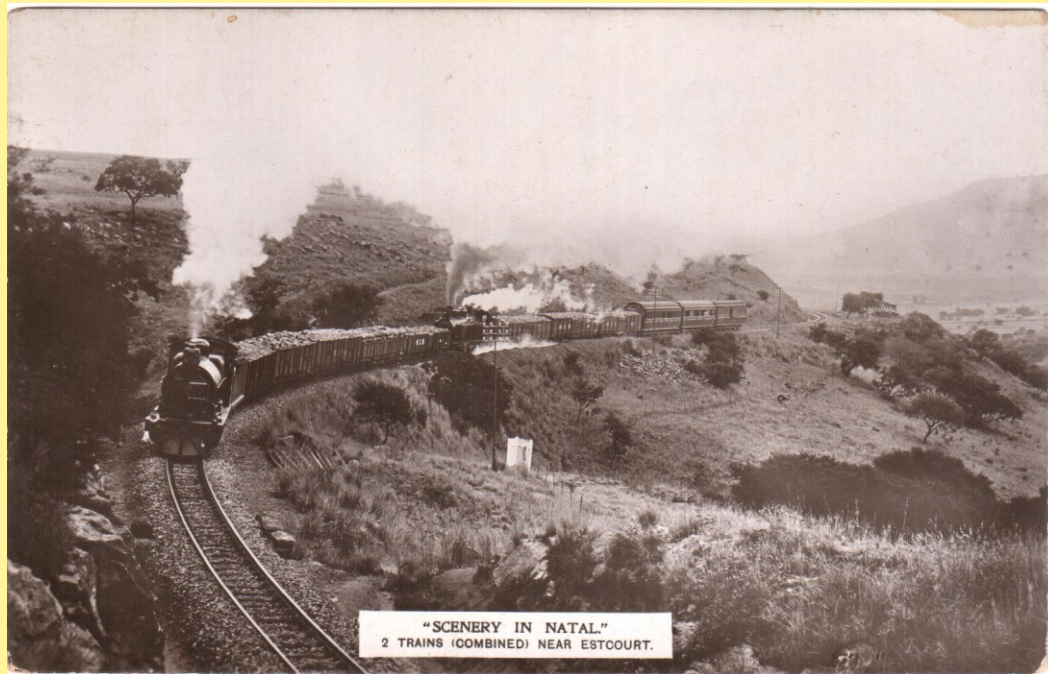
**Used Amanzimtoti JU 22 06 to
Cape Town JU 27 1906.**

NATAL GOVERNMENT RAILWAYS

**Main line from Pietermaritzburg to
Charlestown on the border with
the Transvaal. Introduction of the
'Corridor Dining Train'.**

**Used Ladysmith? to Pietermaritzburg
AU 26 06, undivided.**





"SCENERY IN NATAL."
2 TRAINS (COMBINED) NEAR ESTCOURT.

Both Mooi River and Estcourt lie in steep-sided valleys. The steep gradients were a challenge for locomotive designers and railway engineers.

Unused, divided, publisher Unknown. Two trains combined.

RAILWAY STATION ESTCOURT

**Estcourt DE 3 11 to Channel Isle,
Divided, photo by Fred Hamm,
Published by FH Taylor, Estcourt.**

**Locomotive at the platform is a
Hendrie 'B' Class, the first 4-8-2
'mountain type' in the world, with an
electric headlight, Designed by DA
Hendrie (NGR superintendent) and used
on the corridor mail trains.**



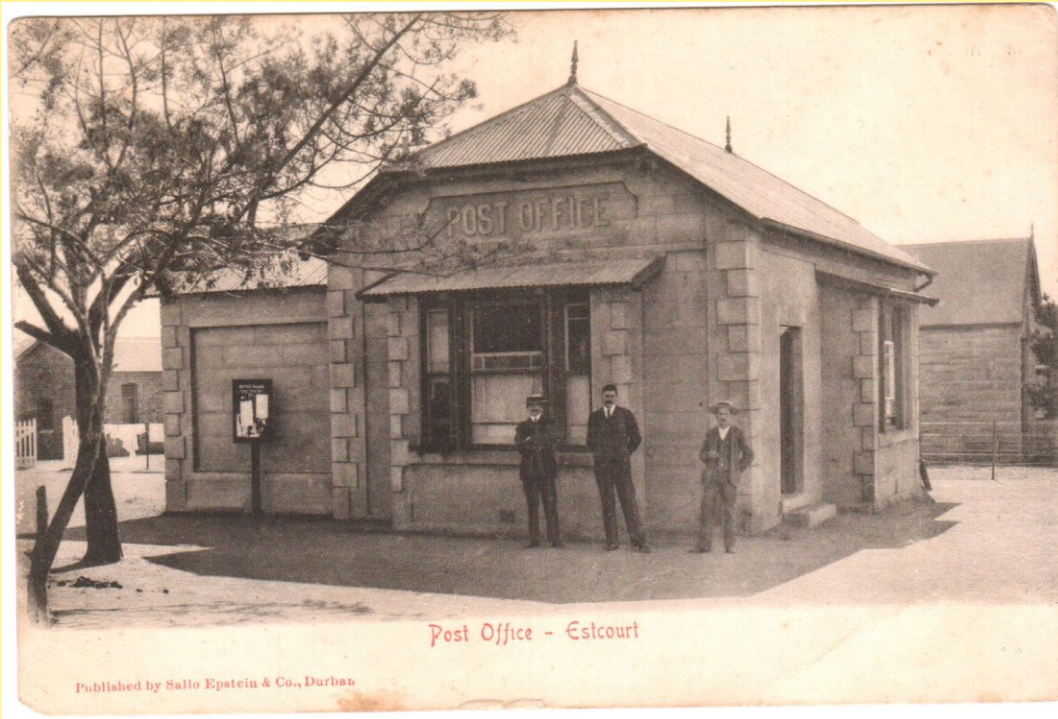
RAILWAY STATION (ARRIVAL OF MAIL TRAIN). ESTCOURT. NATAL.

PUBLISHED BY F. H. TAYLOR,
ESTCOURT.

ESTCOURT RAIL

FE 1 97

Confirming the presence of a
post office at the Estcourt Station.



ESTCOURT POST OFFICE

Unused, divided, published
by Sallo Epstein & Co.



LADYSMITH POST OFFICE

Ladysmith AU 2 05 to Durban,
Undivided, published Sallo Epstein

LADYSMITH POST OFFICE

Unused, divided, Arco Sepia No 70
British





CHARLESTOWN POST OFFICE

Charlestown JY 29 6 to Scotland,
undivided, Sallo Epstein.



CHARLESTOWN STATION 5386 ft asl – 1641 m asl.

Unused, undivided. Sallo Epstein



BRANCH LINE PMBURG TO GREYTOWN.

GREYTOWN STATION
The Dubs 'A' locomotive No 86
was built by Dubs & Co.

Greytown 1 MAR 12 to Durban,
divided, A Moon & Co., Greytown.

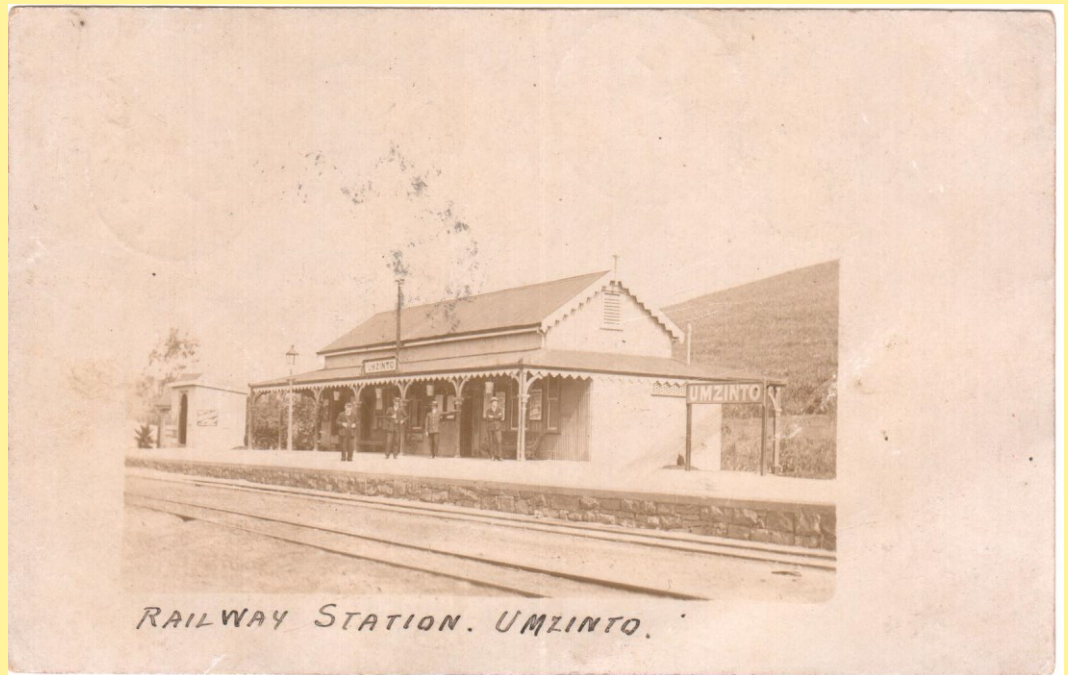
GREYTOWN POST OFFICE

The sandbags and
barb-wire entanglement s
surrounding the building were
fortifications constructed
during the 1906 Bambatha
Rebellion.

Unused, divided, publisher
Unknown.



**BRANCH LINE DURBAN
TO PORT SHEPSTONE**

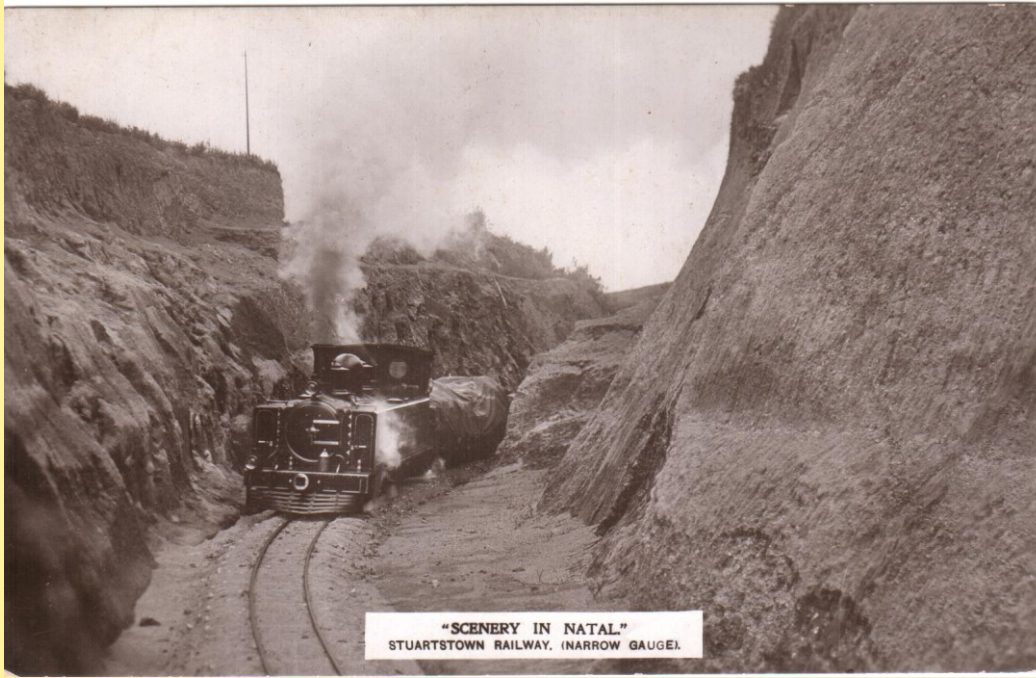


UMZINTO STATION

**Umzinto JU 4 07 to Greytown, divided,
publisher unknown.**

UMZINTO RAIL SP 21 06.





"SCENERY IN NATAL"
STUARTSTOWN RAILWAY. (NARROW GAUGE).

**UMZINTO – DONNYBROOK NARROW-GUAGE
BRANCH LINE.
Completed in 1908.**

Unused, divided, publisher unknown.



N G R Donnybrook 3-FEB. 1911